

ESS KIT DDC50S-21Y-1200

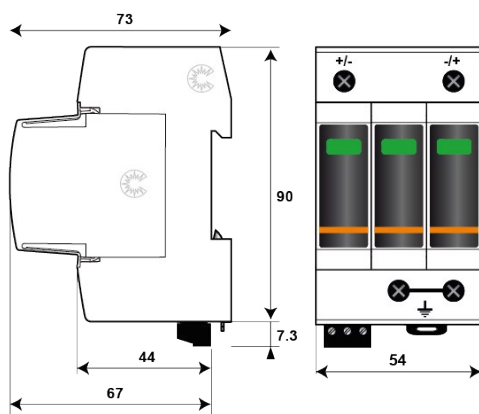


- Kit for ESS applications
- U_c DC : 1200 V
- Pluggable module for each phase (SPD)
- Remote signaling and status indicator
- Easy installation
- prIEC 61643-41 - IEC61643-11 compliance (SPD)

KIT Part number	
DDC50S-21Y-1200 + 2 x SFD50-1500DC + 2 x BSFD50-10 + Status indicator	1156339601

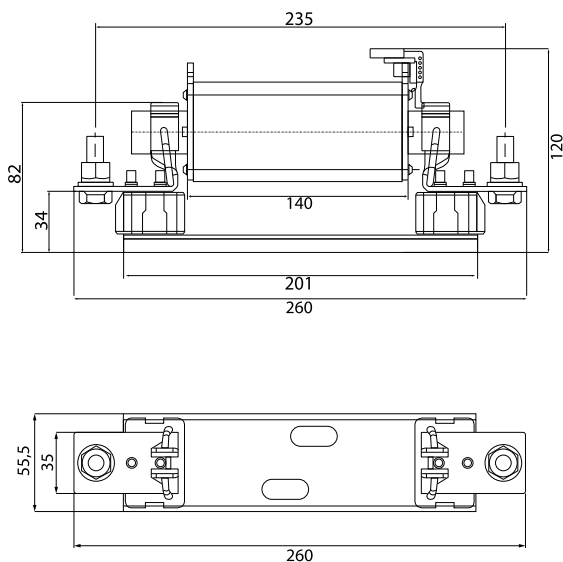
Characteristics DC SPD

CITEL Model		DDC50S-21Y-1200
Description		Type 2 SPD
Max. DC operating voltage	U_c	1200 Vdc
Nominal DC voltage	U_n	1000 Vdc
Residual current - Follow current at U_c	I_{pe}	< 0,1 mA
Nominal discharge current 15 x 8/20 μ s impulses	I_n	20 kA
Max. discharge current max. withstand @ 8/20 μ s by pole	I_{max}	50 kA
Impulse current by pole max. withstand 10/350 μ s	I_{imp}	4 kA
Protection level @ I_n (8/20 μ s) +/-PE (-/PE)	U_p	3,6 kV
Protection level @ I_n (8/20 μ s) +/-	U_p	3,6 kV
Admissible short-circuit current	I_{scrr}	100 000 A
Associated disconnectors		
Thermal disconnector		Internal
Associated Fuse : SFD50S-10-1500DC		50 A min. (I_{scrr} 100 kA) - 125 A max. (I_{scrr} 50 kA) - gBat Fuses
Mechanical characteristics		
Dimensions		see diagram - 3TE (EN43880)
Connection to Network		By screw terminals: 2.5-25 mm ²
Failsafe Mode		Disconnection from DC network
Disconnection indicator		1 mechanical indicator Green/Red by pole
Max. voltage/current for remote signaling		250 V/0.5 A (AC) / 30 V/3 A (DC)
Wiring for remote signaling		1.5 mm ² max.
Mounting		Symmetrical rail 35 mm (EN60715)
Operating temperature		-40/+85°C
Protection rating		IP20
Housing material		Thermoplastic UL94-V0
Spare unit		MDDC50-1200
Standards		
Compliance		prIEC 61643-41 - IEC61643-11
Certification		EAC



ESS KIT DDC50S-21Y-1200

Characteristics Fuses



CITEL Model		SFD50S-10-1500DC
Max. DC operating voltage	Uc	1500 Vac
Nominal discharge current <i>15 x 8/20 μs impulses</i>	In	20 kA
Equivalent rated AC current		50 A gBat
Breaking capacity		100 000 A
Power dissipation		14 W / 6 W (0,7xIn)
Mechanical characteristics		
Dimensions		see diagram
Fuse configuration		1 pole
Format		NH1XL
Mounting		On CITEL base (provided)
Disconnection indicator		Top fuse status indicator
Weight		1,5 kg
Standards		
Standards compliance		IEC 60269-7
Certification		EAC