



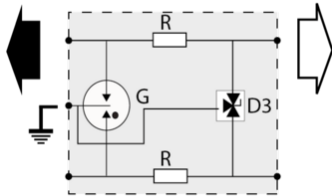
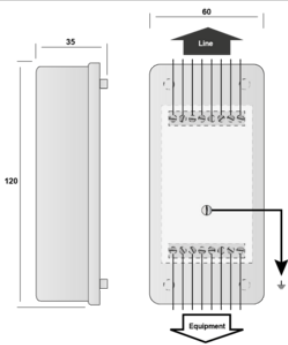
2-pair Data surge protector unit

CITEL

B280-12D3



- ↳ 2-pair surge protection unit
- ↳ 12 V
- ↳ Removable protection circuit
- ↳ Wall mounting and screw connection
- ↳ UL497 A&B



G: 3-electrode gas tube
 R: Resistor
 D3: 3-pole clamping diode

Electrical Characteristics	
Network	RS232, RS485
Nominal line voltage	Un 12 V
Max. DC operating voltage	Uc 15 Vdc
Max. frequency	f max. > 3 MHz
Insertion loss	< 1 dB
Max. discharge current <i>max. withstand @ 8/20 μs by pole</i>	Imax 20 kA
Protection mode(s)	Common/Differential mode
Protection level <i>Following the test category C3 (IEC61643-21) - Line/Line</i>	Up 30 V
Protection level <i>Following the test category C3 (IEC61643-21) - Line/PE</i>	Up 20 V
Line resistance	< 4.7 Ohm
Mechanical Characteristics	
Technology	GDT+Clamping diode
SPD configuration	2 pairs
Connection to Network	By screw terminal: cross section 0.4-1.5mm ²
Format	Wall mounting box
Mounting	Wall mounting by screws (not supplied)
Housing material	Thermoplastic UL94 V-0
Operating temperature	Tu -40/+85°C
Protection rating	IP20
Failsafe mode	Short-circuit - transmission cut-off - fault mode 2
Spare module(s)	S280-12D3
Dimensions	See diagram
Weight	0.12 kg
Standards	
Standards compliance	IEC 61643-21 / EN 61643-21 / UL497A
Certification	UL 497B
Part number	
72772	

