



CITEL

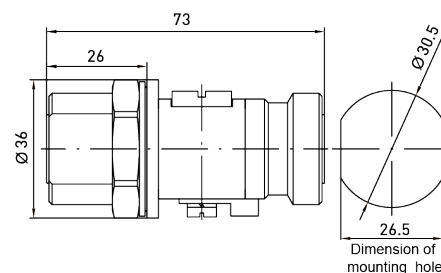


P8AX25-716/FF



- RF coaxial surge protector
- 3.5 GHz
- 190 W
- Connectors :7/16
- Low insertion loss
- Removable GDT
- DC-pass
- Bi-directional protection

Electrical Characteristics		
Max. load current	<i>IL</i>	10 A
Max. frequency	<i>f</i>	DC-3.5GHz
Insertion loss		< 0.2dB
Residual Current <i>Leakage current to Ground</i>	<i>I_{pe}</i>	none
Max. discharge current <i>max. withstand @ 8/20 μs by pole</i>	<i>I_{max}</i>	20 kA
Protection mode(s)		Common mode
Protection level <i>@ I_n (8/20μs)</i>	<i>U_p</i>	< 750 V
Impulse current <i>2 x 10/350μs Test - D1 Category</i>	<i>I_{imp}</i>	1 kA
Nominal discharge current <i>8/20μs Test x 10 - C2 Category</i>	<i>I_n</i>	5 kA
Impedance		50 ohms
Max Power		190 W
Return loss		> 20 dB
VSWR		<1.2:1
Insulation resistance		≥10 GOhms
bandwith limit <i>low</i>	<i>kHz</i>	dc
bandwith limit <i>high</i>	<i>kHz</i>	3500000
Impedance	<i>Ω</i>	50
Insertion loss <i>Maximum</i>	<i>db</i>	<0.2
Return Loss <i>Minimum</i>	<i>db</i>	>20
VSWR <i>Maximum</i>	<i>:1</i>	<1.2:1
Nominal Discharge Current <i>I_n (8/20μs x 10)</i>	<i>kA</i>	5
DC Pass		Yes
Connection Method		Series (bi-directional)
End of life		Short-circuit





Mechanical Characteristics	
Technology	Gas discharge tube
Connection to Network	Connector 7/16
Mounting	Feedthrough
Housing material	Brass/Surface plating : Cu Zn Sn
Operating temperature	-40/+85°C
Protection rating	IP66
Outdoor application	Yes
Failsafe behavior	Short-circuit
Disconnection indicator	Transmission interrupt
Spare module(s)	BBHF-250V
Dimensions	See diagram
Contacts	Bronze/Surface Au-Ag
Insulation material	PTFE
Technology	GDT
Standards	
Standards compliance	IEC 61643-21 / EN 61643-21 / UL497C /
RohS compliance	Yes
Part Number	
	60414