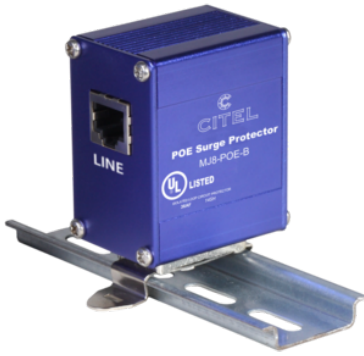


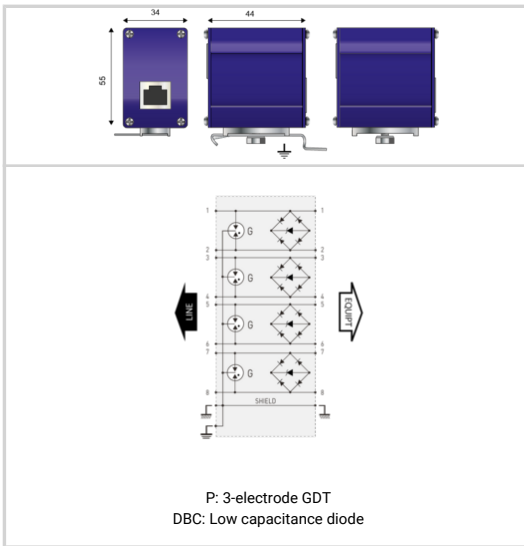


CITEL

MJ8-POE-B



- Discover our latest innovation : the [MJ8-POE-C6A](#)
- POE++ compatible
- Gigabit Ethernet (Cat.5E)
- Shielded enclosure and connectors
- 2 kA discharge capability
- UL497B certified
- IEC 61643-21, EN 61643-21 compliance



Electrical Characteristics		
Network		POE-B and Gigabit Ethernet, High POE
Nominal line voltage	Un	5 Vdc/48 Vdc
Max. DC operating voltage	Uc	7.5 Vdc (1.2.3.6) - 60 Vdc (4.5.7.8)
Max. frequency	f max.	100 Mhz
Max. data rate		10/100/1000 Mbps
Insertion loss		< 1 dB
Protection level	Up	20/70 V
<i>Following the test category C3 (IEC61643-21) - Line/Line</i>		
Impulse current	Iimp	500 A
<i>D1 category (10/350µs), 2 applications, X-C (Line/Earth)</i>		
Line/Line Nominal discharge current	In L/L	500 A
<i>C2 Category</i>		
Nominal Discharge Current, X-C (Line/Earth)	In L/PE	2000 A
<i>8/20µs Test x 10 - C2 Category</i>		
Mechanical Characteristics		
Technology		GDT+Clamping diode
SPD configuration		8 wires+shielded
Connection to Network		RJ45 shielded connectors Female input/output
Format		Metallic box with connectors input/output
Mounting		Mounting flange,Screw lug, DIN Rail
Accessory(s) provided		DIN rail adapter, screw, screw nut, earthing plate, countersunk screw, cable shoe
Housing material		Aluminium
Operating temperature	Tu	-40/+85°C
Protection rating		IP20
Failsafe mode		Short-circuit - transmission cut-off
Disconnection indicator		Transmission interrupt - default mode 2
Pinout		(1-2)(3-6)(4-5)(7-8)
Dimensions		See diagram
Weight		0.115 kg
Standards		
Standards compliance		IEC 61643-21 / EN 61643-21 / UL497 B / IEEE 802-3ab/3at
Certification		UL 497B
Part number		
581518		

