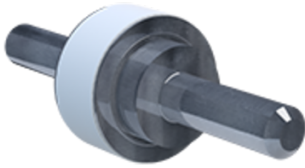




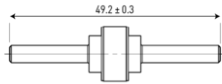
# CITEL

## Isolating spark gap (ISG)

### BF P100 600/20



- ↳ Isolating spark gap
- ↳ Outdoor application
- ↳ Max. discharge current: 100 kA
- ↳ EN 62561-3 compliance



Electrical Characteristics		
Rated DC withstand voltage	Uw DC	480 V
Rated AC withstand voltage	Uw AC	330 V
Max. discharge current <i>max. withstand @ 8/20 μs by pole</i>	I <sub>max</sub>	100 kA
Impulse current by pole <i>max. withstand 10/350 μs by pole</i>	I <sub>imp</sub>	50 kA
Classification following IEC 62561-3		N
Rated impulse sparkover voltage <i>1kV/μs</i>	Ur limp	1300 V
Mechanical Characteristics		
Technology		Gas discharge tube
Connection to Network		Wire (BF PS) wire terminal (BF PC)
Operating temperature	Tu	-40/+85°C
Operating and storage temperature		-40°C / +90°C
Protection rating		IP67
Number of units per package		20 units per cardboard
Dimensions		See diagram
Weight		19.4 kg
Standards		
Standards compliance		EN 62561-3
RohS compliance		Yes
Part number		
<b>90231389</b>		

