



CITEL

SURGE PROTECTORS

FOR

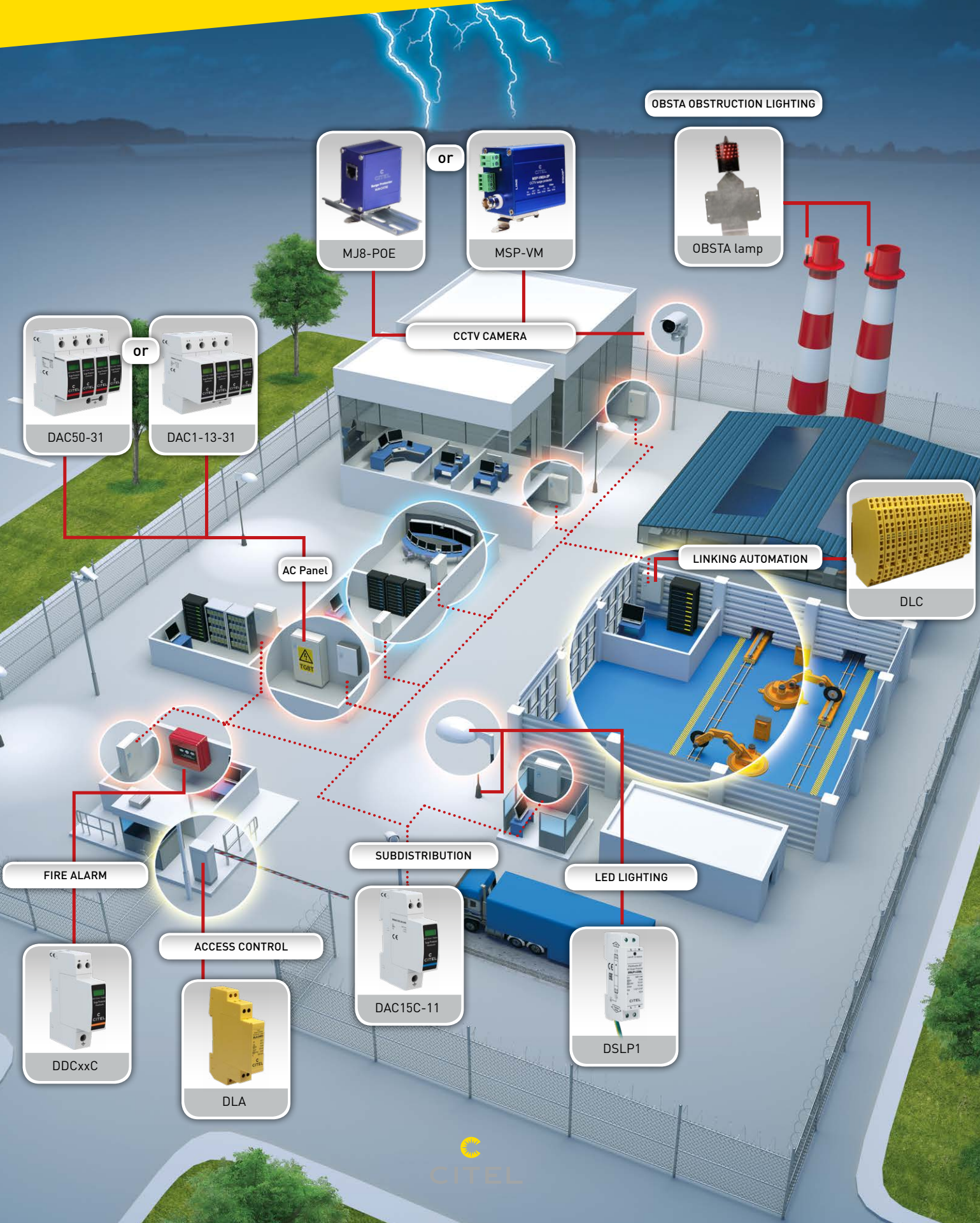
Industrial sites

www.citel.fr

The equipment used in your manufacturing facilities are very sensitive and vulnerable to lightning and switching surges.

If these systems are damaged by a transient, then the entire protection strategy could be compromise : surge protection is highly recommended.

The cost of fully surge protecting an industrial plant is limited and provides peace of mind that your system will be operational when you need it most.



AC SURGE PROTECTORS

3-PHASE TYPE 2 SURGE PROTECTORS



Citel range	DAC40C-31-275	DAC50-31-275
3-phase network	230/400 V	230/400 V
SPD Configuration	3-phase+N	3-phase+N
Max. AC operating voltage	275 VAC	275 VAC
Nominal discharge current	20 kA	20 kA
Maximal discharge current	40 kA	50 kA
Connection	Screw terminal 10 mm ² max	Screw terminal 25 mm ² max
Mounting	DIN Rail	DIN Rail
Dimensions (width)	36mm	72mm
Remote signaling	Option	Option

SINGLE-PHASE TYPE 2 SURGE PROTECTORS



Citel range	DAC40C-11-275	DAC15C-11-275
Single-phase network	230/400 V	230/400 V
SPD Configuration	Single-phase	Single-phase
Max. AC operating voltage	275 V	275 V
Nominal discharge current	20 kA	5 kA
Maximal discharge current	40 kA	15 kA
Connection	Screw terminal 10 mm ² max	Screw terminal 10 mm ² max
Mounting	DIN Rail	DIN Rail
Dimensions (width)	18mm	18mm
Remote signaling	Option	Option

3-PHASE TYPE 1 SURGE PROTECTORS



Citel range	DAC1-13-31-275	DAC1-13VG-31-275
Single-phase network	230/400 V	230/400 V
SPD Configuration	3-phase+N	3-phase+N
Max. AC operating voltage	275 V	275 V
Nominal discharge current	20 kA	20 kA
Lightning current 10/350µs	12,5 kA	12,5 kA
Connection	Screw terminal 25 mm ² max	Screw terminal 25 mm ² max
Mounting	DIN Rail	DIN Rail
Dimensions (width)	72mm	72mm
Remote signaling	Option	Option

LED OUTDOOR LIGHTING

DIN RAIL SINGLE PHASE SURGE PROTECTORS



CITEL part number	DSL1-230L / DLPM1-230L
AC network	230 V single-phase
SPD type	Type 2
Nominal discharge current	5 kA
Maximal discharge current	10 kA
Connection	Screw terminal 2,5mm ² max
Mounting	DIN Rail
End of life indicator (SPD disconnection)	- Green light indicator OFF (DSL1P) - Red mechanical indicator (DLMP) - AC network OFF
Remote signalling	No
Dimensions (width/height)	18 mm/38 mm

CCTV CAMERAS & FIRE ALARMS

COMBINED CCTV SURGE PROTECTORS

The MSP-VM-2P series is designed to protect Pan Tilt Zoom security cameras connected to a CCTV network from transient overvoltages. It is a triple protection for video signal, 24 V or 230 Vac power supply and RS485 data signal lines.



Citel range	MSP-VM24-2P	MSP-VM230-2P
Max. video line voltage	6 Vdc	6 Vdc
Max. data line voltage	8 Vdc	8 Vdc
Max. power line voltage	30 Vac/Vdc	255 Vac
Nominal discharge current (In) 8/20µs impulse - 10 times	5kA/10kA (video)	5kA/10kA (video)

POE++ SURGE PROTECTORS



Citel range	MJ8-POE-A
Description/network	RJ45 SPD for POE++ / Gigabit Ethernet (cat.5E)
Max. line voltage	60 Vdc
Nominal discharge current (In) (line/ground @ 8/20µs)	2 kA
Connectors	Shielded RJ45

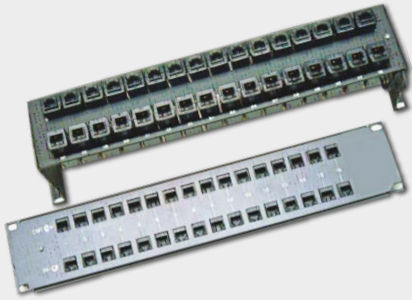
DC TYPE 2 SURGE PROTECTORS



Citel range	DDCxxC
Network	12 up to 350 Vdc power
SPD Configuration	2-pole
Nominal discharge current	10, 15 or 20 kA
Maximal discharge current	20 and 40 kA
Connection	Screw terminal 10 mm ² max.
Mounting	DIN Rail
Remote signaling	Option

CONTROL ROOMS

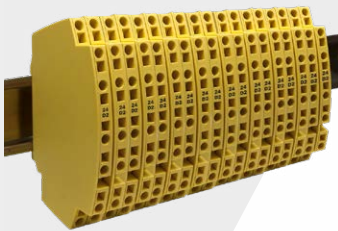
19" RACK SURGE PROTECTORS



Citel range	RAK16-BNC	RAK16-E-C6	RAK16-POE-A
Type of line	Video BNC	Ethernet Cat. 6	Ethernet POE
Number of ports	16	16	16
Maximum line voltage	7.5 Vdc	7.5 Vdc	60 Vdc
Nominal discharge current	600 A	500 A	250 A
Connectors	BNC	RJ45	RJ45

DATA NETWORK

COMPACT DATALINE SURGE PROTECTORS



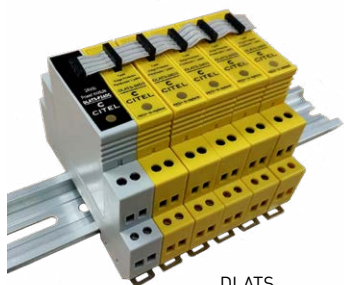
Citel range	DLC-06D3	DLC-12D3	DLC-24D3	DLC-48D3
Typical application	RS422, RS485	RS232/RS485	LS, 4-20mA	RNIS-T0, 48 V line
Configuration	1pair+shield	1 pair+shield	1 pair+shield	1 pair+shield
Nominal line voltage	6 V	12 V	24 V	48 V
Max. line current	300 mA	300 mA	300 mA	300 mA
Nominal discharge current	5 kA	5 kA	5 kA	5 kA
Maximum discharge current	10 kA	10 kA	10 kA	10 kA
Mounting	DIN rail	DIN rail	DIN rail	DIN rail

DATALINE SURGE PROTECTORS



DLA

DLAS



DLATS

Citel range	DLA-xxx	DLAS-xxx	DLATS-xxx
Feature	Plug-in	Plug-in + Signaling	Plug-in + Remote signaling
Typical application	FieldBus RS422 RS232 RS485 4-20 mA 48 V line ADSL VDSL		
Configuration	1pair+shield		
Nominal line voltage	6 V up to 48 V		
Max. line current	300 mA		
Nominal discharge current	5 kA		
Maximum discharge current	20 kA		
Mounting	DIN rail		

Head office

France
Tél. : +33 1 41 23 50 23
e-mail : contact@citel.fr
Web : www.citel.fr

Factory

Reims
Tél. : +33 3 26 85 74 00
e-mail : contact@citel.fr

Germany

Bochum
Tél. : +49 234 54 72 10
e-mail : info@citel.de
Web : www.citel.de

USA

Miramar
Tel : (954) 430 6310
e-mail : info@citel.us
Web site : www.citel.us

China

Sales department
Shanghai
Tél. : +86 21 58 12 25 25
e-mail : info@citelsh.com
Web : www.citel.cn

Factory

Tél. : +86 21 58 12 80 67

Russia

Moscou
Tél. : +7 499 391 47 64
e-mail : info@citel.ru
Web : www.citel.ru

India

New Delhi
Tél. : +91 11 2626 12 38
e-mail : indiacitel@gmail.com
Web : www.citel.in

Thailand

Bangkok
Tél. : +66 (0) 2 104 9214
Web : www.citel.fr

