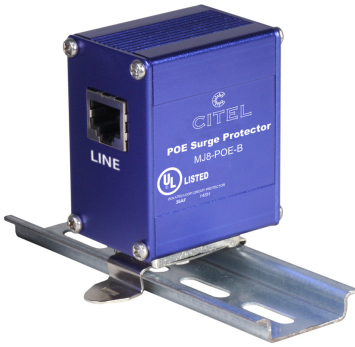




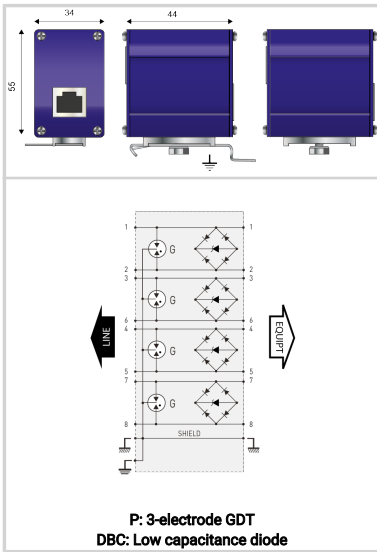
# CITEL

## Surge protector for POE ++ and Category 6A cabling network

### MJ8-POE-B



- ▶ POE++ compatible (IEEE 802.3bt)
- ▶ 10G compatible from 5m to 100m in the channel, using Cat-6A S/FTP cabling
- ▶ RJ45 Shielded connectors
- ▶ IEC 61643-21, EN 61643-21
- ▶ Indoor application: IP20 rating (NEMA 2)
- ▶ Plastic enclosure, UL94-V0
- ▶ Location and test categories: D1, C2, C3



Electrical Characteristics		
Network		POE-B and Gigabit Ethernet, High POE
Nominal line voltage	Un	5 Vdc/48 Vdc
Max. DC operating voltage	Uc	7.5 Vdc (1.2.3.6) - 60 Vdc (4.5.7.8)
Max. frequency	f max.	100 Mhz
Max. data rate		10/100/1000 Mbps
Insertion loss		< 1 dB
Max. load current @25°C	IL	2 A
Max. POE power (4PPOE)		90 W
Nominal Discharge Current, X-C (Line/Earth) 8/20µs Test x 10 - C2 Category	In L/PE	2000 A
Max. discharge current max. withstand @ 8/20 µs, 8X-C (1&amp;2+3&amp;6+4&amp;5+7&amp;8 to Earth)	I <sub>max</sub> Total	16 kA
Protection Level C3 (10/1000µs), 300 applications@10 A, Y-Y (Line/Line)	Up	20/70 V
Protection Level C3 (10/1000µs), 300 applications@10 A, Y-C (Line/Earth)	Up	20/70 V
Impulse current D1 (10/350µs), 2 applications, X-C (Line/Earth)	I <sub>imp</sub>	500 A
Line/Line Nominal discharge current C2 Category	In L/L	500 A
Capacitance @1MHz, X-C (Line/Earth)	C	< 5 pF
Mechanical Characteristics		
Technology		GDT+TVS diode
SPD configuration		8 wires+shielded
Connection to Network		RJ45 shielded connectors Female input/output
Format		Metallic box with connectors input/output
Mounting		Mounting flange,Screw lug, DIN Rail
Accessory(s) provided		DIN rail adapter, screw, screw nut, earthing plate, countersunk screw, cable shoe
Housing material		Aluminium
Operating temperature	Tu	-40/+85°C
Protection rating		IP20
Failsafe mode		Short-circuit - transmission cut-off
Disconnection indicator		Transmission interrupt - default mode 2
Pinout		(1-2)(3-6)(4-5)(7-8)
Dimensions		See diagram
Weight		0.115 kg
Standards		
Standards compliance		IEC 61643-21 / EN 61643-21 / UL497 B / IEEE 802-3ab/3at
Certification		UL listed
Environmental standards		EU RoHS
Part number		
<b>581518</b>		

